



| eZ-Net Manager



About eZ-Net Manager

eZ-Net Manager allows you to control one or more monitors more easily via Serial and Network. If eZ-Net Manager is installed on your PC, you can control various operations with a few clicks of the mouse. Also, eZ-Net Manager provides self-diagnosis of monitors and convenient upgrades for easier management.

Before Use

Please read the below carefully before using the eZ-Net Manager

■ Ethernet Controller

- MCU + Ethernet
- IEEE 802.3, 10Base-T
- Flash 60Kbytes, Tx/Rx buffer 8Kbytes

■ eZ-Net Manager Features

- LAN + Serial Management Program
- Compatible with Windows XP Professional and Windows Vista 32-bit Edition.

- Network + Serial Management Program
 - All-in-one Program
 - Extends serial distance when using Network.
- Single/Group WAN Control
 - Controls both the LAN and WAN networks.
 - Supports unlimited MONITOR connections.
- Monitor Auto Searching
 - Automatically searches a monitor in a same network(Sub network).
- Self Diagnosis
 - Real-time monitoring function for the lamp, fan and temperature.
- Scheduling
 - Enables to schedule the monitor power and input operations.
- Easy Tile Mode
 - Convenient GUI for the Tile Mode settings.
- F/W Upgrade via Network
 - Enables to upgrade Ethernet and the monitor F/W via Network.
- Instant Messaging
 - Enables to send the message to the monitor.

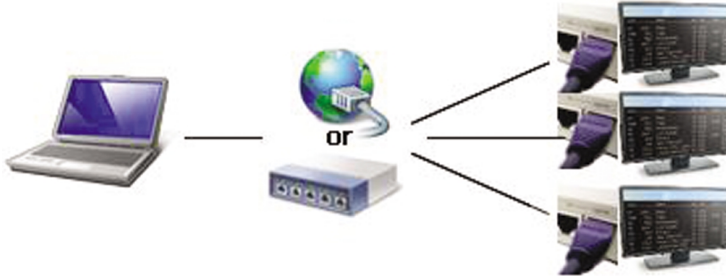
Installation Procedure

1) Monitor Ethernet Environment Establishment

Case 1) Using a ethernet cable, connect PC to Monitor directly.

Case 2) Using a router(Switch), install via LAN (Local Area Network).

Case 3) Using the Internet, install via WAN (Wide Area Network).



2) IP Setup Via Monitor OSD

Step 1) Select LAN under [Option] - [Network Setup] - [Network Select].

Step 2) Select DHCP or Manual.

Step 3) If Manual: IP settings

Step 4) Run Execute to receive an IP address.

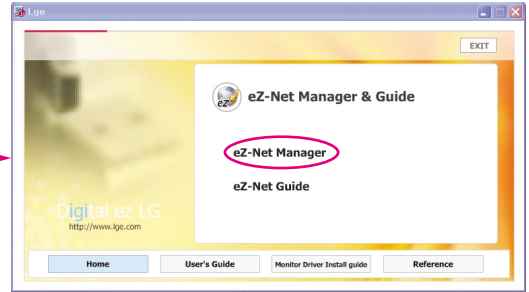
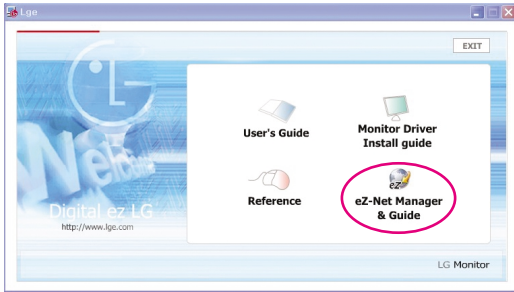
Step 5) Check the IP address under [Information] - [IP Address].

Network Setup	
Network Select	✓ LAN
DHCP	RS232C
Manual	
▲▼◀▶⊙ MENU	

Manual	
IP Address	192.168.000.003
Subnet Mask	255.255.255.000
Default Gateway	192.168.000.001
Primary DNS	169.254.001.001
Secondary DNS	169.254.001.001
Execute	
▲▼◀▶⊙ MENU	

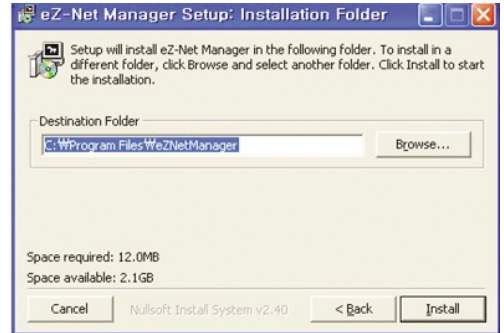
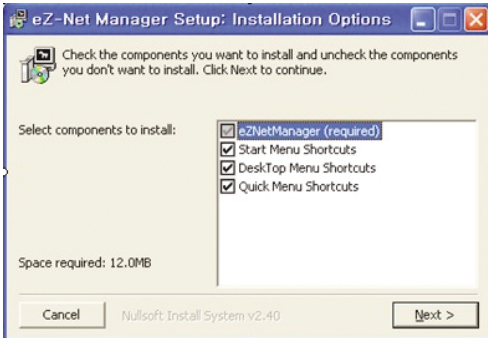
3) eZ-Net Manager Program Installation

Step 1) On the main screen of the enclosed CD-ROM, select 'eZ-Net Manager & Guide' → 'eZ-Net Manager', then the installation screen will be automatically displayed.



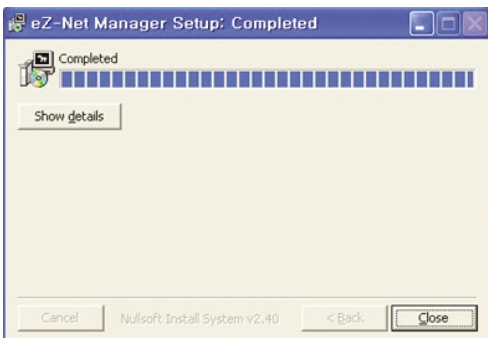
Step 2) eZ-Net Manager Setup will start on the screen.
Click 'Next'

Step 3) Select a destination folder and click Install.



Step 4) eZ-Net Manager program will be installed.

Step 5) When installation is completed, the eZ-Net Manager execution icon will be created on screen



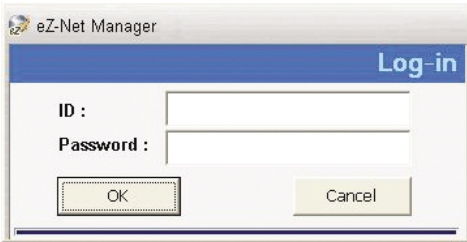
* To remove the program, execute Uninstall.exe in the destination folder or in Add/Remove Programs, and press the Uninstall button.

Login

When you start the program, the Login screen is displayed as shown below.

If you are starting the program for the first time, the default ID and Password are set as shown below.

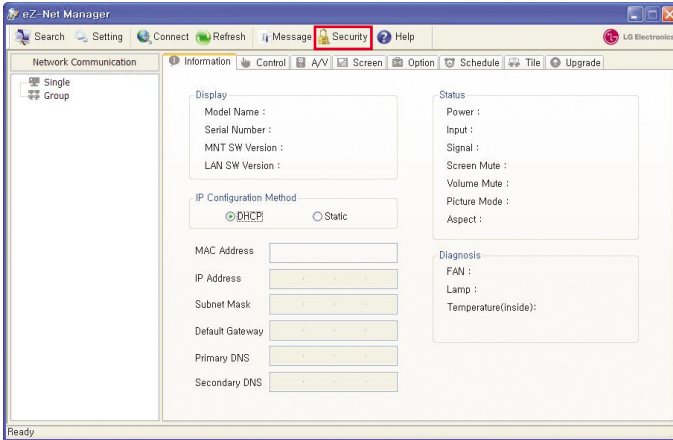
ID: Administrator **Password:** 0000



* If you lose your ID or password, uninstall the program and install it again.

To change ID and Password,

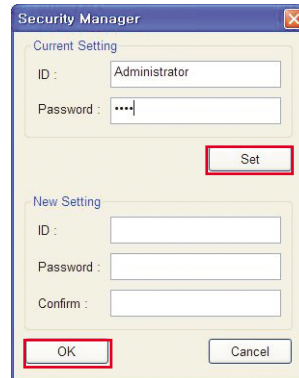
Step 1) Select Security in the toolbar.



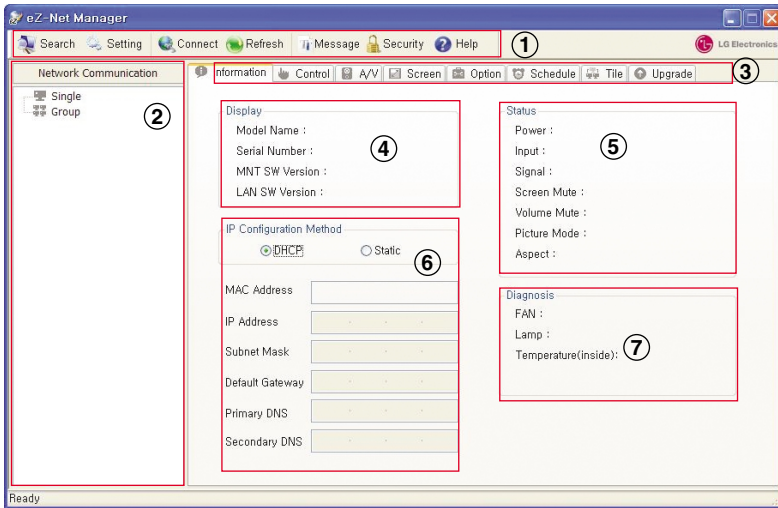
Step 2) Enter the current ID and Password into Current Setting, and select Set.

If the ID and Password are invalid, the warning window appears.

Step 3) When the New Setting window is activated, enter a new ID and Password, and click OK.



4) The Initial Screen of Management S/W Program



① Tool Bar

Contains Search, Settings for network connections, and Help

② Monitor Register Window

Displays searched Monitors and allows creating Monitor groups.

③ Control Tap

Displays Monitor control functions.

④ Display

Displays the information of a selected Monitor .

⑤ Status

Displays the current status of a selected Monitor .

⑥ IP Setup

Displays and allows changing a selected Monitor 's IP configuration.








⑦ Diagnosis

Displays the real-time status of a selected Monitor .

NOTE

- The [Upgrade] tab is used only for service.

Function Description

-  **Search** Searches and registers a connected Monitor (Only Ethernet).
-  **Setting** Enables to select and set up network connections: Ethernet or Serial
-  **Connect** Enables to manually connect to a selected Monitor (Only Ethernet).
-  **Refresh** Enables to refresh the information on a selected tab.
-  **Message** The instant messaging function for the selected monitor
-  **Security** Changes ID and Password for login.
-  **Help** Displays the program information.

Display

Model Name :	M4224C
Serial Number :	6500000
MNT SW Version :	3,00
LAN SW Version :	2,11

Model Name : The model name of a current Monitor

Serial Number : The serial number of a current Monitor

Monitor SW Version : The monitor software version of a current Monitor

LAN SW Version : The Ethernet software version of a current Monitor

Diagnosis

FAN :	N/A
Lamp :	OK
Temperature(inside):	25 degrees[C] 77 degrees[F]

FAN, LAMP

Displays a current Monitor 's fan and lamp status: (normal : OK, anomalous : NG.)

Temperature (inside)

Displays a current Monitor 's inner temperature.

Status

Power :	On
Input :	RGB_PC
Signal :	No Signal
Screen Mute :	Off
Volume Mute :	Off
Picture Mode :	Standard
Aspect :	16 : 9

Displays a current Monitor 's overall status:

Power (On/Off), Input, Signal, Screen and Volume Mutes, Picture Mode, and Aspect.

IP Configuration Method

DHCP Static

MAC Address	00 - 04 - A3 - 00 - 00 - 00
IP Address	10 . 160 . 160 . 169
Subnet Mask	255 . 255 . 254 . 0
Default Gateway	10 . 160 . 160 . 1
Primary DNS	0 . 0 . 0 . 0
Secondary DNS	0 . 0 . 0 . 0

IP Configuration Method

Displays a current Monitor 's IP configuration (DHCP/Static).

IP Information

Displays a current Monitor 's IP information including MAC Address.

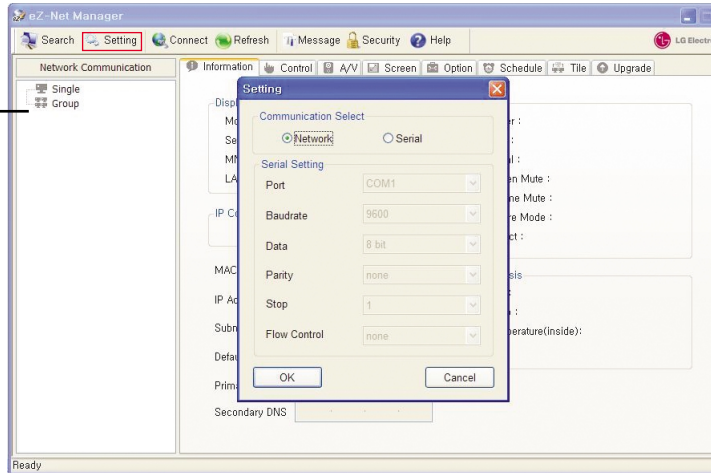
Communication Settings

Provide an all-in-one program to control both serial port and network connections and improve customer convenience.

Step 1) Select Setting on the toolbar;

- Enables to select Network or Serial.
- The default value is Network.
- If Network is desired, just press OK to exit the menu.

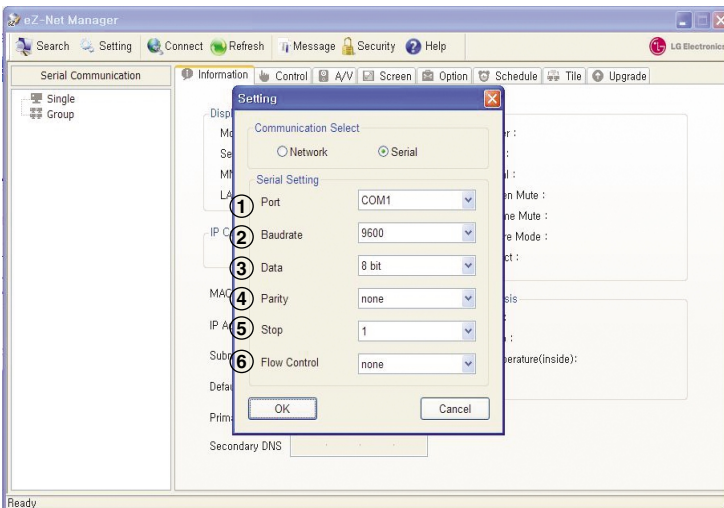
The leftward information window displays a selected network connection: Network or Serial.



Displays operation progress.



Step 2) If Serial Port is desired, select Serial and set up the details.



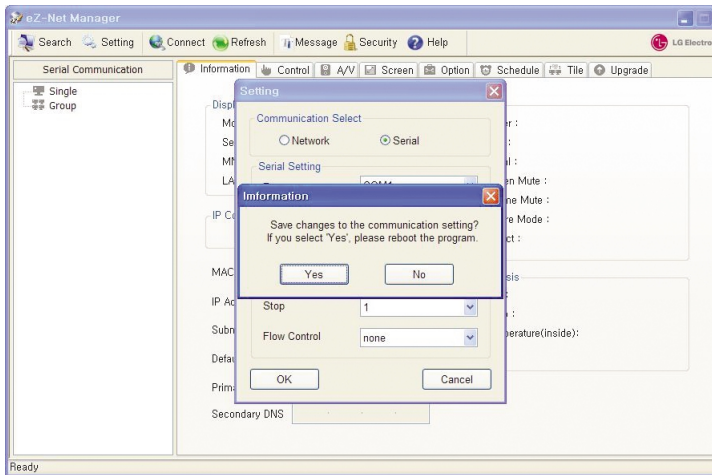
- 1 Port**
Select a port: COM1 ~ COM9. Default Value: COM1
- 2 Baudrate**
Select a connection speed: 2400 ~ 115200. Default Value: 9600
- 3 Data**
Select a data value: Data5 ~ Data8. Default Value: Data8
- 4 Parity**
Select a parity check: even, odd, none. Default Value: none
- 5 Stop**
Select a stop bit: 0 ~ 1. Default Value: 1
- 6 Flow Control**
Select a flow control: Xon/Xoff, hardware, or none. Default Value: none

When Communication Setting is changed (Serial <-> Network),

You need to exit and restart the program.

Click Yes in the popup message to exit the program.

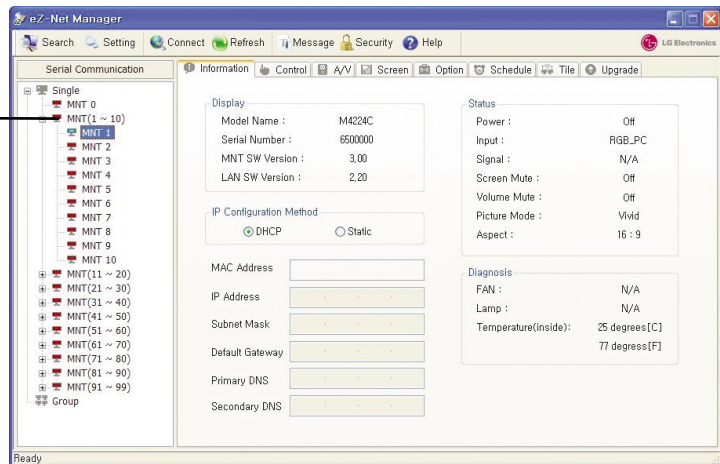
If you restart the program, the initial screen for the selected Setting is displayed.



When you select Serial, the IDs of monitors supported by default are displayed in the registration window on the left side of the initial screen. You can select the ID of a monitor you want and control it.

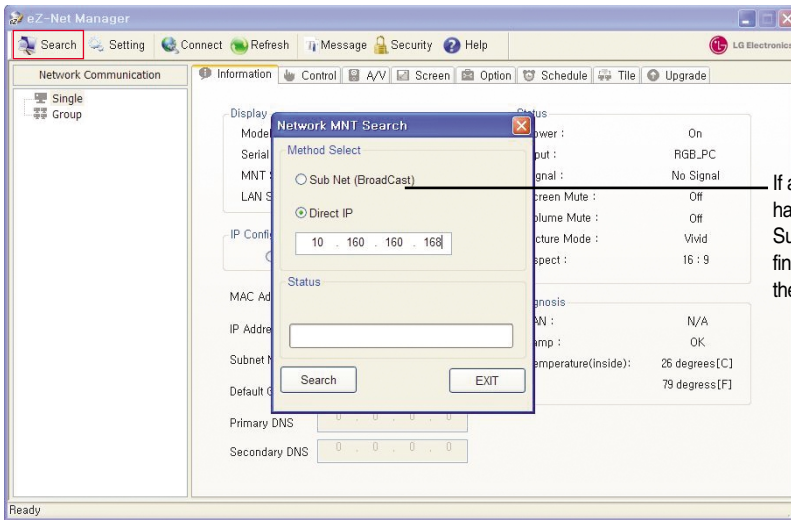
You can control it by selecting the same MNT number as the Set ID value of the monitor you selected.

For MNT0, the Set ID value is 0, and you can control all monitors regardless of monitor Set IDs. However Ack Data cannot be received.



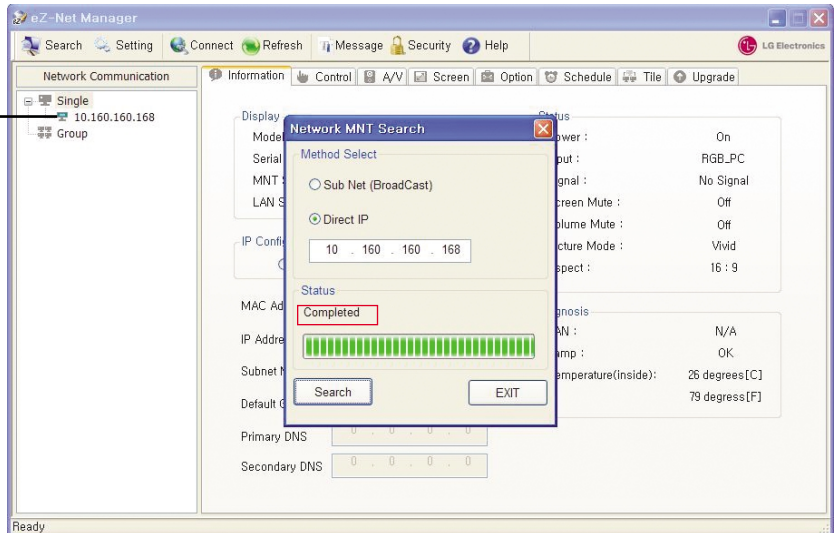
MONITOR Search(Only Network)

Step 1) Press Search on the toolbar, and then enter an IP address.



If an Monitor connection to a PC has been established, selecting SubNet (Broadcast) automatically finds the Monitor without entering the IP address.

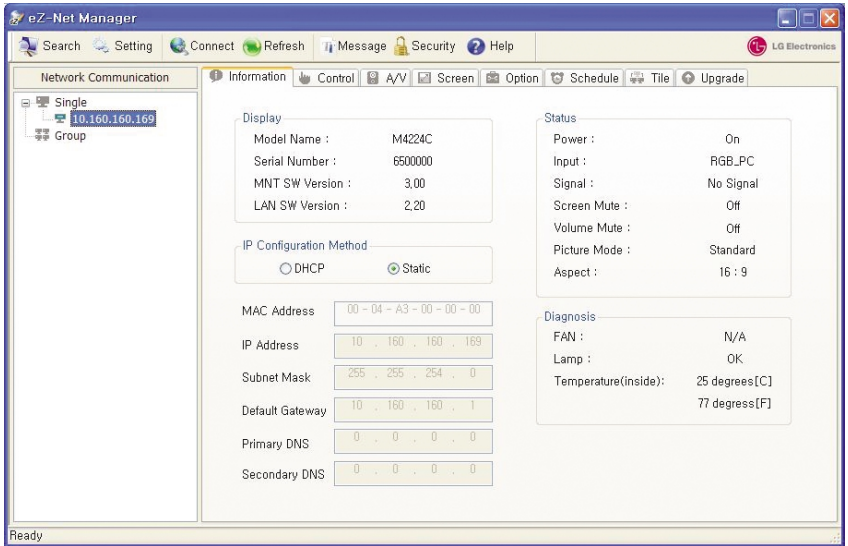
Step 2) If a desired Monitor has been successfully found, the Monitor information is displayed in the search window.



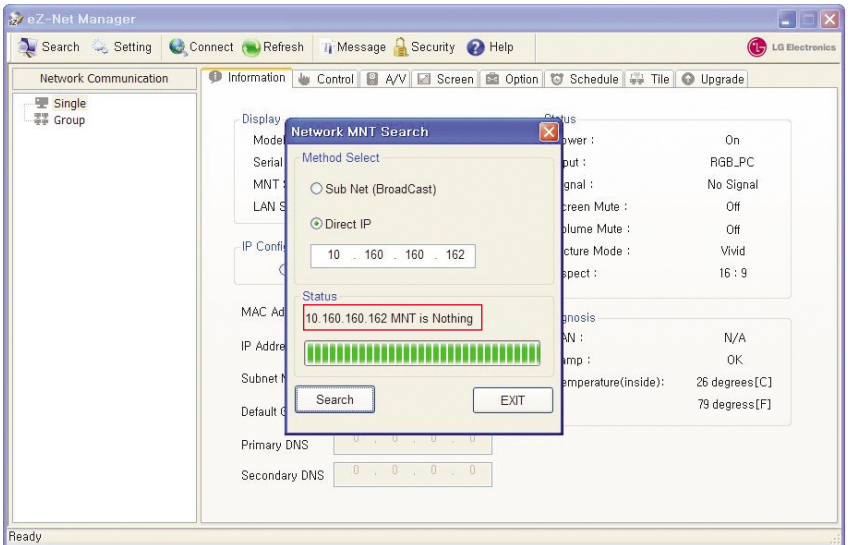
If the network connection is normal, it turns blue as shown in the image. If the network is disconnected, it turns red. Also, it turns yellow if there are any errors in the fan, panel or temperature.

* If the monitor does not have valid network information, Direct IP search is not available.

Step 3) Selecting the Monitor of a registered IP address loads the Monitor information.

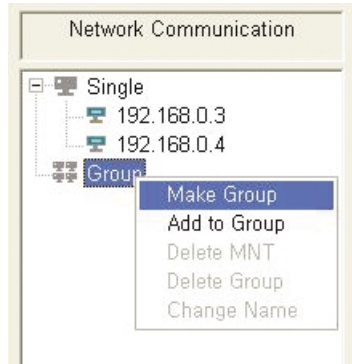


Step 4) Searching an inexistent or disconnected Monitor results in failure.

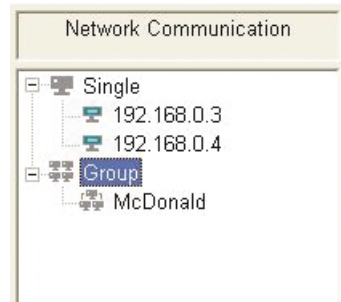
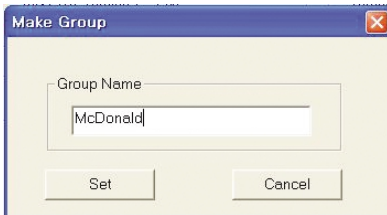


Group Settings

Step 1) Select Group, right-click and select Make Group.

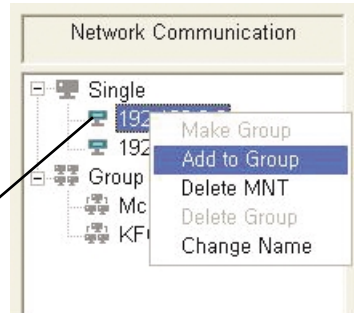


Step 2) Enter a group name and click Set.

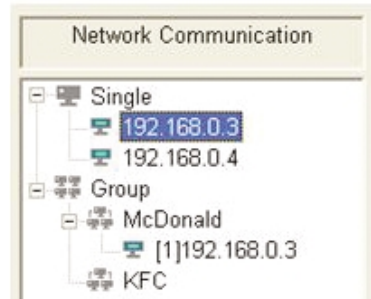
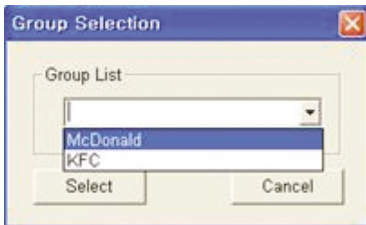


Step 3) Right-click on a monitor in Single to add to a group and click Add to Group.

Drag & Drop Interface: Drag & drop a monitor to add it to the group you want.

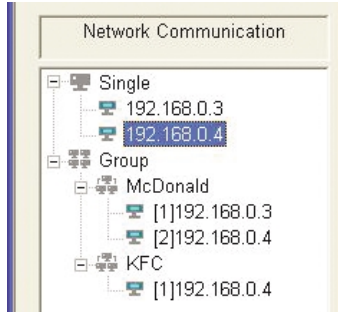


Step 4) Select a group to add the monitor to.

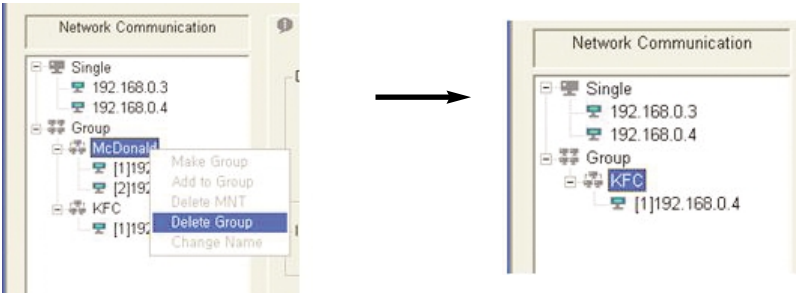


Delete Group

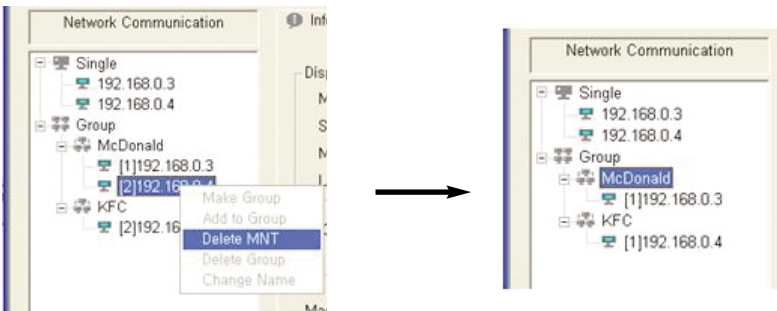
To delete a group or delete a monitor from a group, or if you do not want to control a specific monitor in Single, you can delete the monitor easily.



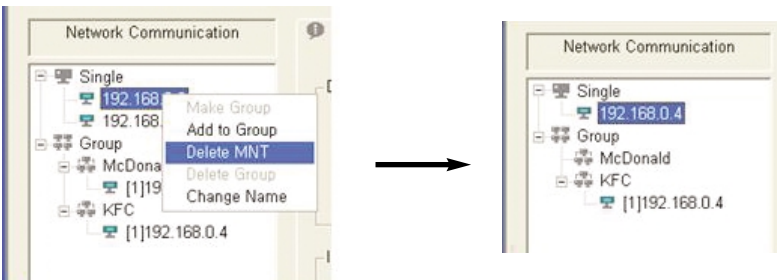
Case 1) To delete a group (e.g.: McDonald)



Case 2) To delete a monitor from a group (e.g.: 192.168.0.4 in McDonald)



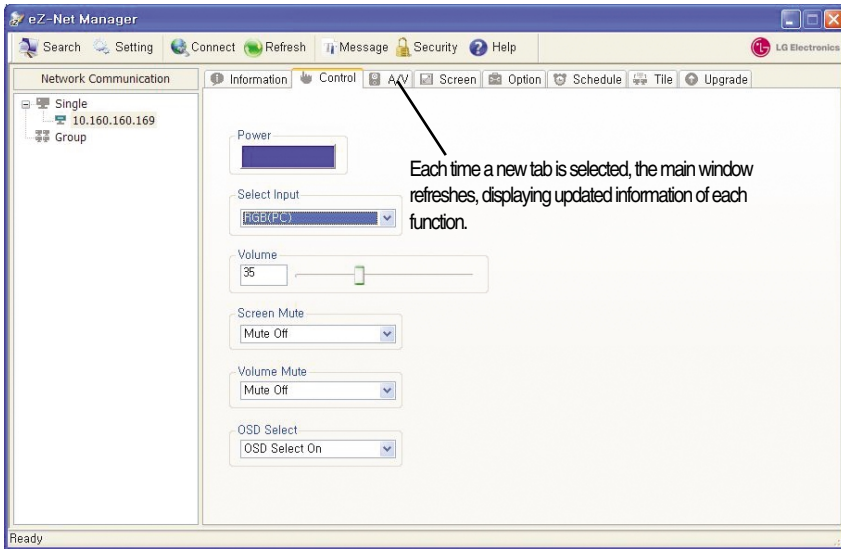
Case 3) To delete a monitor from Single



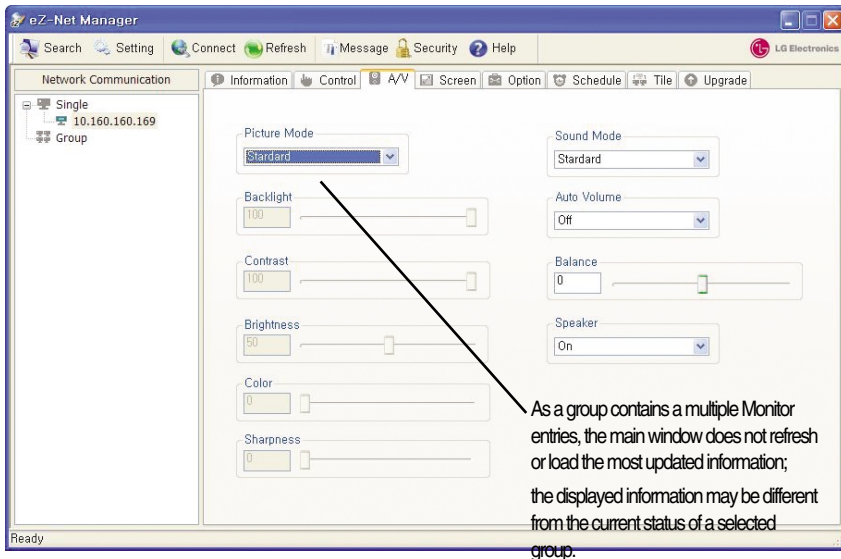
If you delete a monitor from Single and it has been added to a group as well, it is also deleted from the group.

Display Controls

Case 1) For a single Monitor, select a Monitor under the Network Communication window, and then adjust the display settings under a desired tab.



Case 2) For a group Monitor, select a group and adjust the display settings.

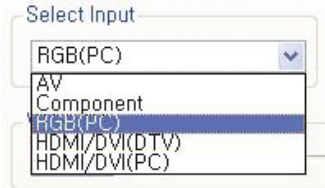


Selecting the Control tab and adjusting the details instantly updates the display settings. The following options are provided under the Control tab.

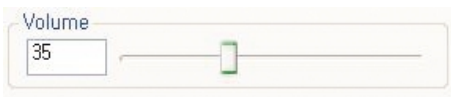
Toggle Button Types



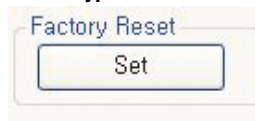
Drop-down Combo Box Types



Slide Bar Types

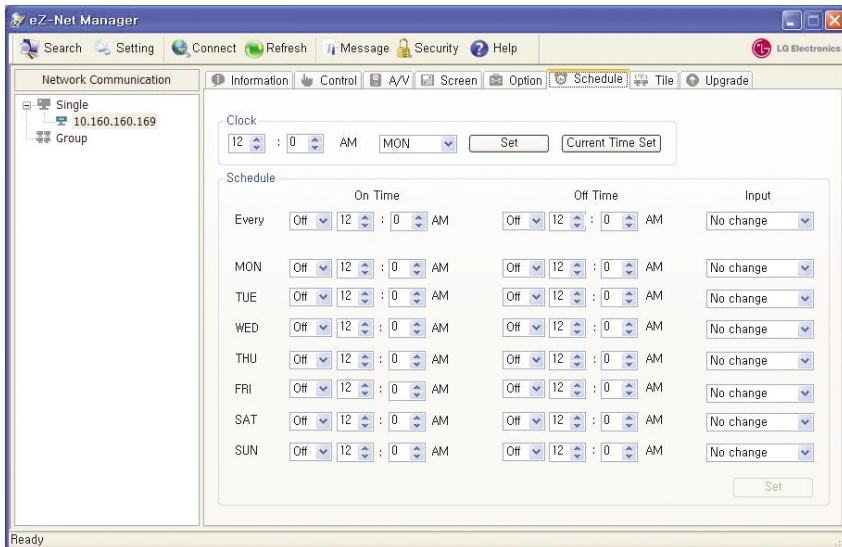


Button Types



Scheduling

Step 1) If an is not set up with a clock, the Schedule tab displays as shown in the example picture; the scheduling function is disabled.



Step 2) Set up the clock to the current time, and then press Set.

Clock

12 : 0 AM MON Set Current Time Set

Case 1) To turn on and off at same times everyday, set up the On Time, Off Time, and Input settings.

If On is selected for the Every option, every individual day values--from Mon to Sun--automatically set to the same as the everyday settings.

Schedule

	On Time	Off Time	Input
Every	On 5 : 27 AM	On 12 : 7 AM	No change
MON	On 5 : 27 AM	On 12 : 7 AM	No change
TUE	On 5 : 27 AM	On 12 : 7 AM	No change
WED	On 5 : 27 AM	On 12 : 7 AM	No change
THU	On 5 : 27 AM	On 12 : 7 AM	No change
FRI	On 5 : 27 AM	On 12 : 7 AM	No change
SAT	On 5 : 27 AM	On 12 : 7 AM	No change
SUN	On 5 : 27 AM	On 12 : 7 AM	No change

Set

Case 2) To set up different on and off times per day, set up each day's OnTime, OffTime, and Input settings individually.

On the contrary, if On is selected for a day, the Every option automatically changes to Off.

The basic operations are identical to the monitor.

Schedule

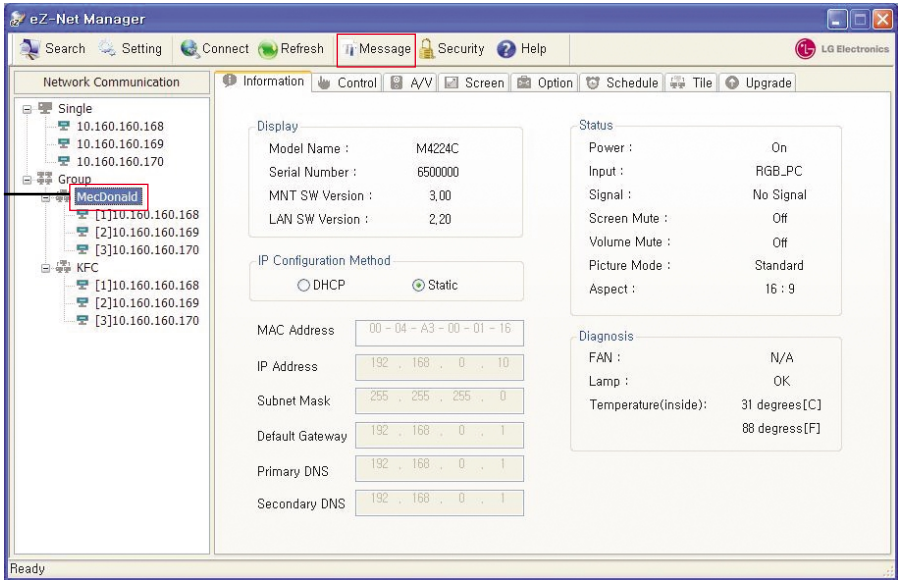
	On Time	Off Time	Input
Every	Off 5 : 6 AM	Off 12 : 7 AM	No change
MON	On 5 : 6 AM	On 12 : 7 AM	No change
TUE	Off 5 : 6 AM	Off 12 : 7 AM	No change
WED	Off 5 : 6 AM	Off 12 : 7 AM	No change
THU	Off 5 : 6 AM	Off 12 : 7 AM	No change
FRI	Off 5 : 6 AM	Off 12 : 7 AM	No change
SAT	Off 5 : 6 AM	Off 12 : 7 AM	No change
SUN	Off 5 : 6 AM	Off 12 : 7 AM	No change

Set

Instant Messaging

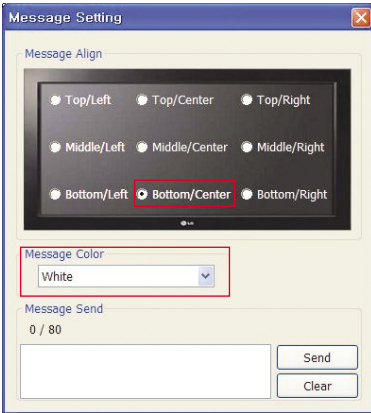
Step 1) Click the Message button in the Tool Bar to open the Message Setting dialog window.

The Message Setting dialog window will not open unless you select a monitor and a group.

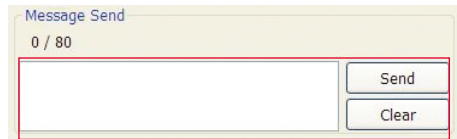


Step 2) Set Message Align and Message Color in the Message Setting dialog window.

Step 3) Enter a message in Message Send and click the Send button.



Bottom/Center is the default value for Message Align, and White is the default value for Message Color.



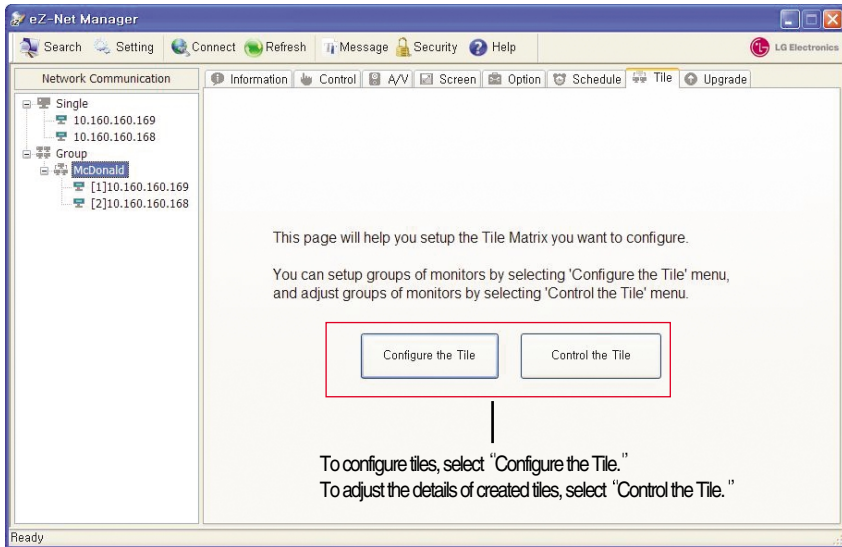
* Enter text here. Up to 80 characters are supported.

* Only English characters and numbers are available.

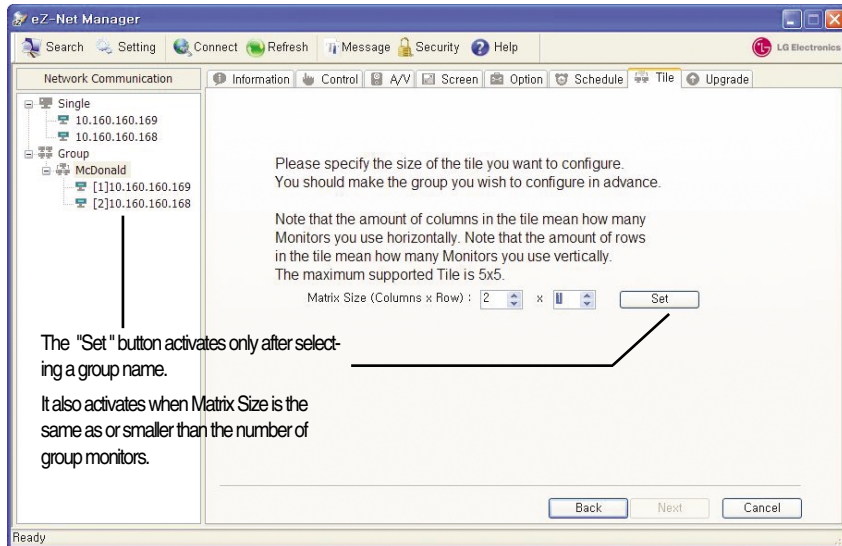
* Clicking the Send button will send the message you entered, whilst clicking the Clear button will delete it.

Tile Mode(1)

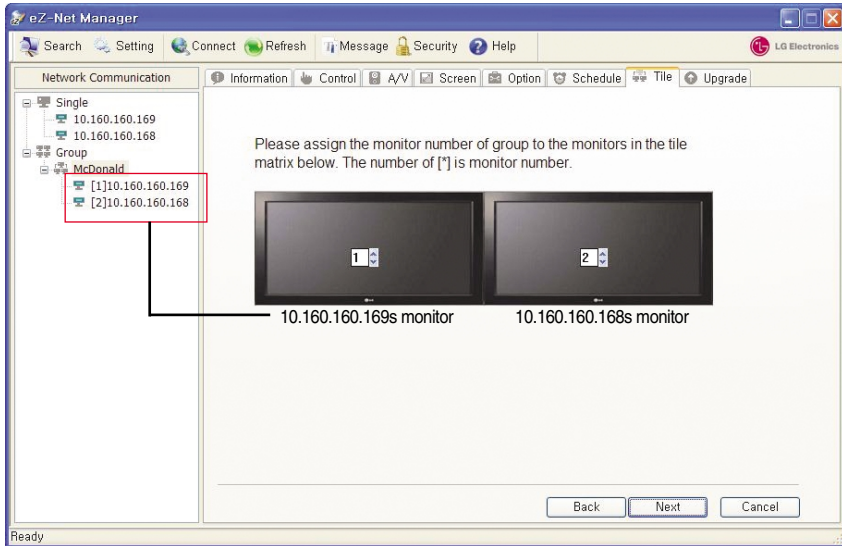
Step 1) Tile Tab's Initial Screen



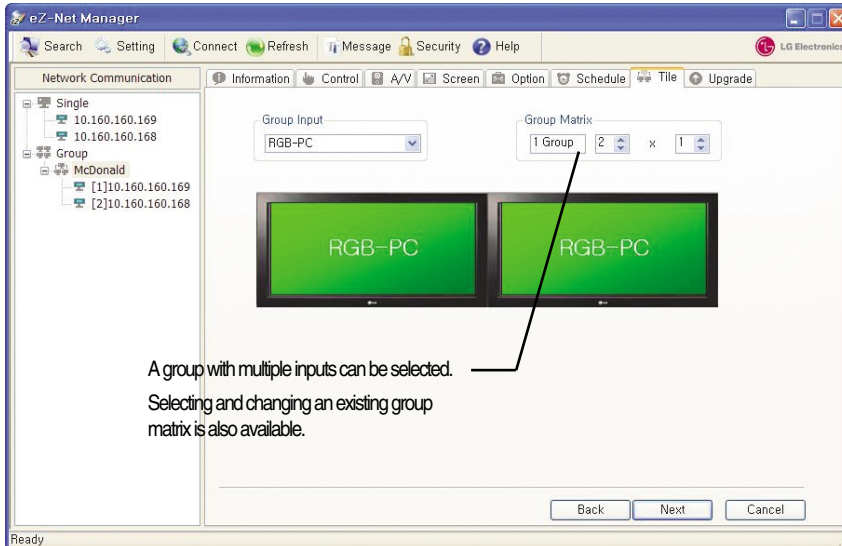
Step 2) Select "Configure the Tile", and then adjust the Matrix Size.



Step 3) Allocate monitor numbers to selected monitors.

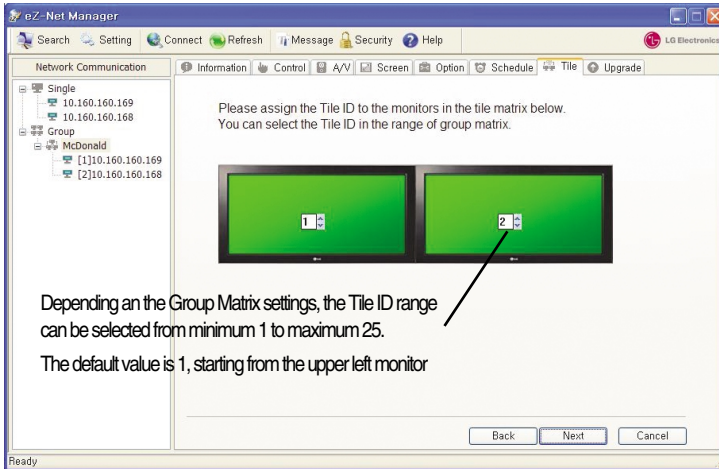


Step 4) Select a group under Group Input and then adjust the Group Matrix.
Click on a Monitor to add it to the current Group.

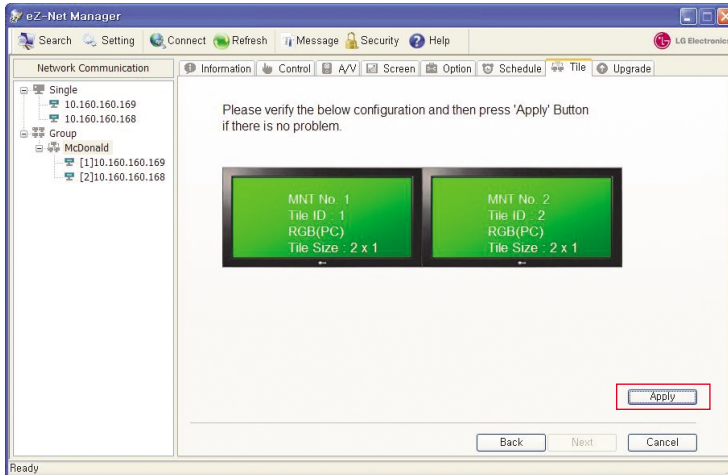


Tile Mode(2)

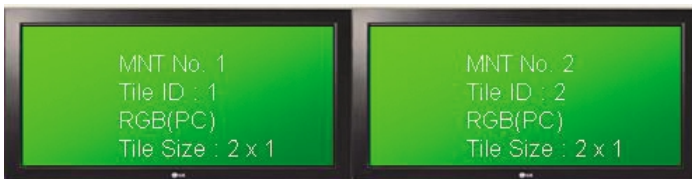
Step 5) Select a Tile ID. Tile IDs are manually changeable.



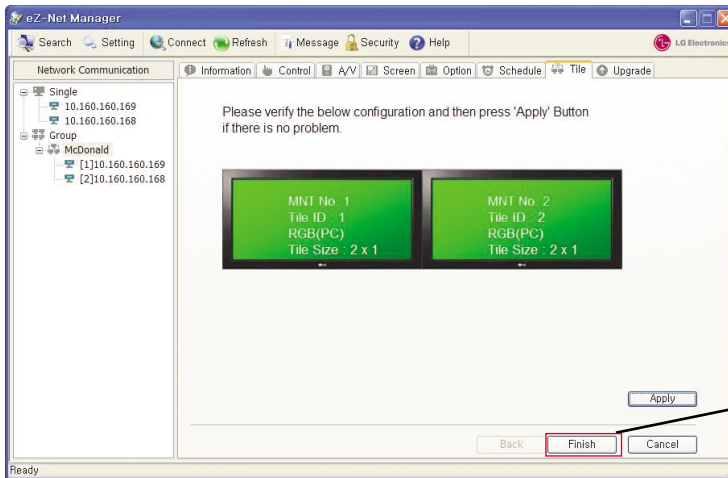
Step 6) Check the new settings, and then select "Apply".



If successful, the window displays Monitor Number, Tile ID, Input, and Group Tile Size as shown in the picture below:



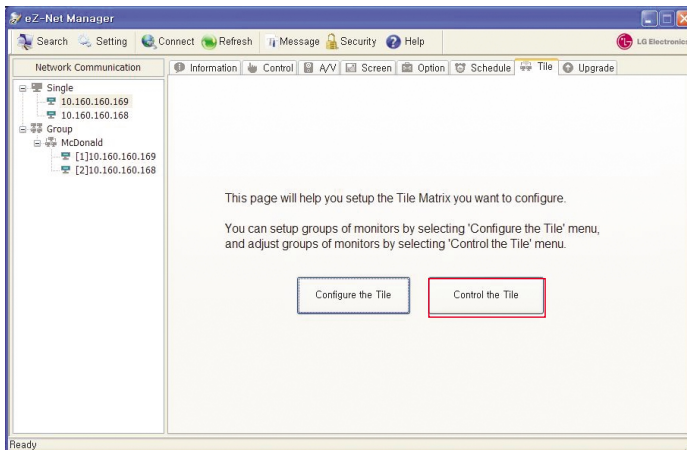
Step 7) If the changed settings are successfully transmitted, the "Finish" button becomes activated.

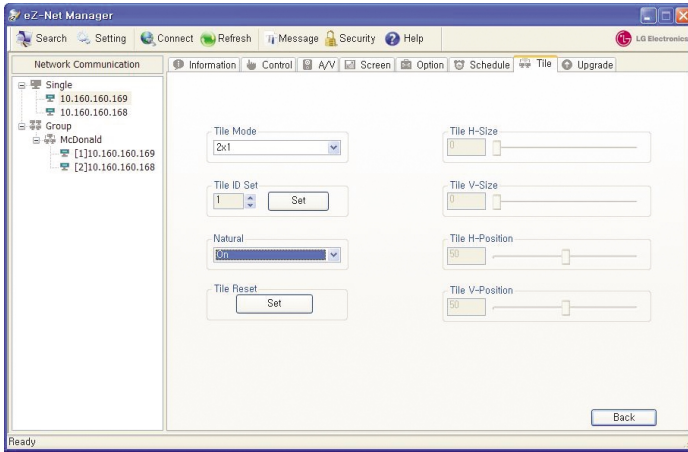


Pressing **Finish** moves back to the initial screen.

Tile Mode(3)

Step 8) Once a group is set up with monitor tiles, the screen moves back to the initial Tile window.





Step 9) Adjust the details of selected tiles.

